

# CASE STUDY

## Car Park Refurbishment

# MAKERS

...makes the difference

### PROJECT

ASDA Clapham Junction

### STRUCTURE

Upper Deck Car Park

### CLIENT

ASDA

### CONTRACT



ASDA Clapham is a stones throw from Clapham Junction and is located in the town centre surrounded by residential, and retail properties.

Its' upper ground level asphalt deck was in poor condition and suffering from water ingress through to the lower level below. The existing waterproof coating was suffering degradation causing ripples and uneven surfaces and most of the parking spaces were suffering from wheel indentations.

The store operated 24Hrs and therefore the works were carried out in 4 phases in order to maintain an operative car park and service to its' customers, as well as a safe traffic management programme.

Preparation involved the removal of Trolley Bays which were set aside ready to be re-instate after application of deck coatings.

The car park asphalt deck was initially planed, followed by a vacuum shot blast to prepare the asphalt substrate ready for the application of Triflex DeckFloor System.

**T: 0845 899 4444**

**E: [sales@makers.biz](mailto:sales@makers.biz)**

**W: [www.makers.biz](http://www.makers.biz)**

Makers, Office Building 4,  
Shenstone Business Park  
Lynn Lane, Shenstone, WS14 0SB

Registered in England No: 6348341 Registered Office as above.



Before



Before



# CASE STUDY

# MAKERS

...makes the difference



During



During



During

Upstands were treated with the Triflex ProDetail fleece system. Any cracks were treated with a 200mm wide reinforcement fleece saturated in the Triflex resin material providing additional isolated reinforcement to any areas of potential movement. Radflex joints were removed and reinstated during surface treatment works.

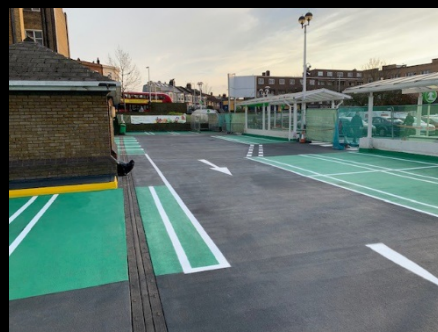
Concrete repairs were carried out throughout the car park, including to the soffits in the lower ground level which was slightly damaged, caused by the water ingress. Joints were removed for refurbishment and reinstated to provide a more watertight structure and tactile paving throughout the walkways were replaced.

Trolley shelters were cleaned and washed down and installed in new locations, damaged kerbs were repaired and storm water drains were cleaned throughout on both decks. Existing vertical bollards were removed and reinstated and new signage was installed throughout the car park.

Within the car park site, is access to the Lavender Hill Day Nursery, so extra consideration was included within the work schedule to carry out works during night shifts in order to maintain a smooth operation and less disruption for the Nursery and its little folk.



After



After



After

**T: 0845 899 4444**  
**E: [sales@makers.biz](mailto:sales@makers.biz)**  
**W: [www.makers.biz](http://www.makers.biz)**

Makers, Office Building 4,  
Shenstone Business Park  
Lynn Lane, Shenstone, WS14 0SB

Registered in England No: 6348341 Registered Office as above.

