

# CASE STUDY

## Metal Sheet Roof Refurbishment

# MAKERS

...makes the difference

### PROJECT

Bristol Mail Centre

### STRUCTURE

Roofing

### CLIENT

Royal Mail

### CONTRACT



Mail Centre, Bristol is a vast sorting hub operated by The Royal Mail. Opened in 1997 in Filton, the centre is one of the largest places of employment throughout Bristol and surrounding areas.

It's the largest Mail Centre in the West Country serving all of Bristol, parts of Gloucestershire, Wiltshire and Somerset. The centre is in constant use 24/7 processing 30,000 parcels per hour using state of the art sorting technology.

An estimated 2.5m items pass through the centre each week. Either sorted manually or via automated systems, the items are then redirected to UK wide delivery offices and reach the recipients within days.

Makers Construction worked closely with Royal Mail to ensure the daily running of the centre was not compromised during the roof refurbishment project. The enormous 20,000 m<sup>2</sup> roof was suffering large areas of water ingress through the damaged metal sheeting above.

Makers partnered with Alumasc to provide a system solution utilising the Caltech METcoat cold applied liquid system, providing the damaged edges with seamless and durable covering.

**T: 0845 899 4444**

**E: [sales@makers.biz](mailto:sales@makers.biz)**

**W: [www.makers.biz](http://www.makers.biz)**

Makers, Office Building 4,  
Shenstone Business Park  
Lynn Lane, Shenstone, WS14 0SB

Registered in England No: 6348341 Registered Office as above.



Before



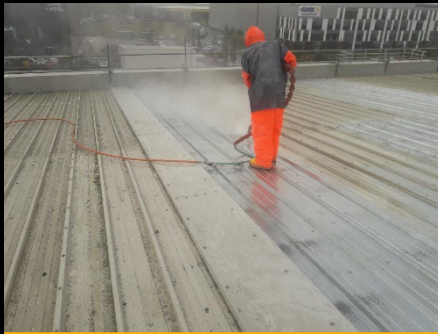
Before



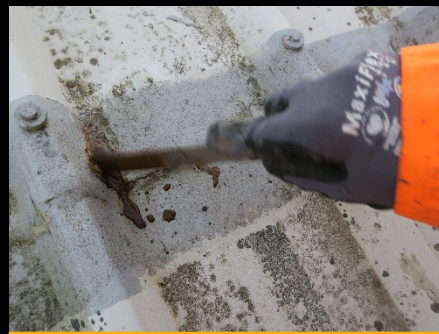
# CASE STUDY

# MAKERS

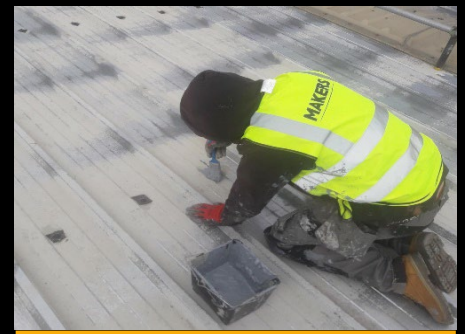
...makes the difference



Preparation – Jetting Clean



Treating The Bolts



Preparing System Install

The metal sheeting was suffering from large areas of cut edge corrosion. The works started on site with the jet washing of the panels before applying the Alumasc Caltech system. Every bolt head was inspected and primed with Caltech METprime liquid before being fully encapsulated with Butyl Tape.

All mid laps and end laps were grinded off and encapsulated with fleece and fully sealed with Caltech tape before three layers of 300 micron paint applied. All rooflights were fully cleaned before applying an Alumasc clear glaze to return the panels to former glory and ensure future protection.

Finally, the gutters and valleys were inspected and fully cleaned. All cut edges and panel angles were fully primed with Caltech QC liquid before applying G-mat glass fibre mat and finished with QC liquid.

This project demonstrates the versatility and experience of Makers Construction, taking on large projects where working closely with the client is key to delivering a quality project and highlights our catalogue of roofing expertise.

This project offered a waterproofing warranty of 20 years giving the client piece of mind and protection.



Spraying Topcoat



Side Lap Encapsulation



System Complete

**T: 0845 899 4444**  
**E: [sales@makers.biz](mailto:sales@makers.biz)**  
**W: [www.makers.biz](http://www.makers.biz)**

Makers, Office Building 4,  
Shenstone Business Park  
Lynn Lane, Shenstone, WS14 0SB

Registered in England No: 6348341 Registered Office as above.

