

CASE STUDY

Roof Top Car Park Refurbishment

MAKERS

...makes the difference

PROJECT

IKEA Nottingham

STRUCTURE

Roof Top Car Park

CLIENT

IKEA

CONTRACT



IKEA in Giltbrook, Nottingham opened in August 1997. Prior to the construction of IKEA and the accompanying retail park, the site was primarily industrial land. Historically, the area housed Giltbrook Dyeing and Finishing Works, a textile processing factory, which was one of the notable industrial establishments before the transformation into a retail space.

The rooftop car park was added during a significant expansion and refurbishment of the store, which was completed in 2008. This development included not only the rooftop car park but also an extension of the retail space and improvements to the overall customer experience.

Unfortunately, since the car park was built it has suffered with historical water ingress and after several attempts to stop the ingress IKEA approached Makers and instructed us to apply a full waterproof system to the asphalt car park deck to the roof of the store this involved several critical steps to ensure a durable and waterproof surface.



Before



After

T: 0845 899 4444

E: sales@makers.biz

W: www.makers.biz

Makers, Office Building 4,
Shenstone Business Park
Lynn Lane, Shenstone, WS14 0SB

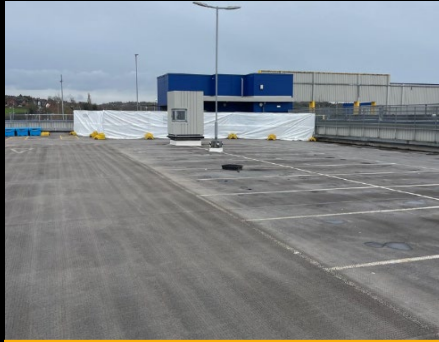
Registered in England No: 6348341 Registered Office as above.



CASE STUDY

MAKERS

...makes the difference



Deck Prep ongoing



Fleece reinforcement installed



Anti-skid wearing layer applied

The process began with captive blasting the asphalt surface, a technique that effectively cleans and prepares the substrate by removing contaminants and creating a suitable texture for subsequent coatings. Following this, fleece banding was applied over existing cracks to provide reinforcement and prevent further propagation, ensuring a seamless and stable base. Additionally, deck repairs were meticulously performed using resin repair mortar, a robust material known for its excellent adhesion and durability. This step was crucial in addressing any structural imperfections and ensuring the overall integrity of the car park.

Once all repairs were complete the application of the full system started this included several advanced techniques to enhance its functionality and durability. Initially, a resin primer was applied to the prepared surface, creating a strong bond between the substrate and the subsequent layers. Following this, a fully fleeced system was installed, providing an additional layer of reinforcement and waterproofing.

To ensure safety, a wearing layer was broadcasted with quartz, which offers a non-slip surface for both pedestrians and vehicles. The resin top coat, chosen in a colour specified by the client, added an aesthetic finish while contributing to the durability of the surface.

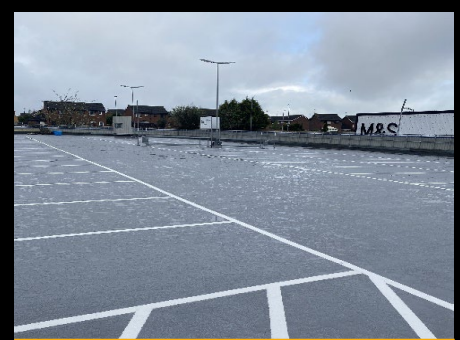
Finally, thermoplastic line marking was used for its long-lasting visibility and resilience, ensuring that the car park's layout remains clear and functional over time. The comprehensive waterproofing measures carried out on behalf of IKEA at their Giltbrook rooftop car park have significantly enhanced the facility's durability and safety. These steps collectively ensured a robust, waterproof, and aesthetically pleasing car park that meets IKEA's high standards for quality and functionality.



Deck coatings complete



Line marking being applied



All works completed

T: 0845 899 4444

E: sales@makers.biz

W: www.makers.biz

Makers, Office Building 4,
Shenstone Business Park
Lynn Lane, Shenstone, WS14 0SB

Registered in England No: 6348341 Registered Office as above.

