

CASE STUDY

Car Park Refurbishment

MAKERS

...makes the difference

PROJECT

NCP MSCP Lincoln

STRUCTURE

Multi Storey Car Park

CLIENT

National Car Parks

CONTRACT



The NCP Brayford Street Car Park is centrally located In Lincoln, providing convenient access to various local attractions, shops and offices.

The car park is a multi-story facility, with the top two floors offering open air parking spaces to the nearby residents only.

Makers were tasked with carrying out the refurbishment works focusing on the top two decks due to water ingress seeping into the existing substrate and causing major issues to both the concrete slab and steel reinforcement creating severe corrosion and concrete spalling. These renovations aim to stop all water ingress and to improve the facilities and ensure the parking area meets the needs and expectations of the end users, therefore Triflex specified their DeckFloor system.

Makers arrived on site hoping for good weather but were instead confronted with one of the wettest summers on record. Despite this challenge, they remained determined and resourceful, pushing on and finding ways to work around the persistent rain. Their dedication ensured that progress continued, even under less-than-ideal conditions, Makers made a good start on site with the team quickly mobilising and hitting the repairs hard to get them out of the way setting a strong foundation for the works ahead.



Before



After

T: 0845 899 4444

E: sales@makers.biz

W: www.makers.biz

Makers, Office Building 4,
Shenstone Business Park
Lynn Lane, Shenstone, WS14 0SB

Registered in England No: 6348341 Registered Office as above.



CASE STUDY

MAKERS

...makes the difference



Edge prep to upstands



Repairs broken out



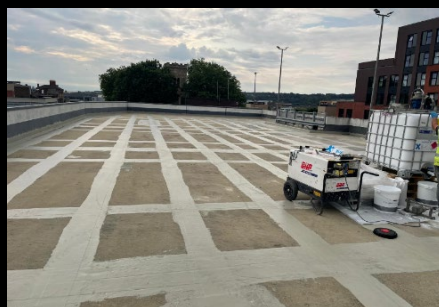
Reinstatement of repairs

Before any coatings could be applied, the substrate underwent thorough preparation, including grinding, planing, and captive blasting, planing removed any irregularities and high spots, whilst grinding ensured a smooth and even surface. The captive blasting was then used to clean and roughen the substrate, creating an ideal profile for optimal adhesion of subsequent coatings. This meticulous preparation was essential to ensure the durability and effectiveness of the coating system. Hard-to-reach areas were meticulously addressed using hand-held tools. This allowed for precise preparation and application in tight or intricate spaces, ensuring that even the most inaccessible parts of the substrate received the necessary treatment for a consistent and durable finish.

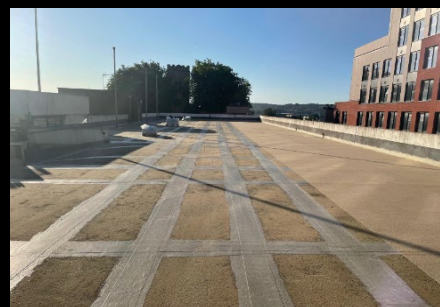
Makers conducted cohesive tests on the substrate and found the readings to be below the required standards. To address this issue, Triflex revised their specification and introduced an epoxy resin primer. Subsequent tests demonstrated that the primer effectively improved the substrate's performance. Once the epoxy primer had been applied, a Triflex reinforcement banding detail was laid over all cracks, day joints and other vulnerable areas to prevent further damage, water ingress and ensure durability.

This was then followed by the Triflex DeckFloor system blinded with quartz. The top coat was subsequently applied, using two different colours specified by the client: one for the parking bays and another for the drive aisles.

Following the application of the top coat, the line marking was carried out using a spray-applied PRECO system. This method ensured precise and durable markings, meeting the client's specifications for the parking bays and drive aisles. The high-quality finish provided clear, long-lasting lines, enhancing both functionality and aesthetics of the parking area.



Reinforcement banding applied



Wearing layer to parking bays



Line marking now complete

T: 0845 899 4444

E: sales@makers.biz

W: www.makers.biz

Makers, Office Building 4,
Shenstone Business Park
Lynn Lane, Shenstone, WS14 0SB

Registered in England No: 6348341 Registered Office as above.

